

# Battery Repair Guide

Jabra Evolve3 75



## Say hello to a more sustainable product

IT products are associated with a wide range of sustainability risks throughout their life cycle. Human rights violations are common in the factories. Harmful substances are used both in products and their manufacture. Products can often have a short lifespan because of poor ergonomics, low quality and when they are not able to be repaired or upgraded.

**This product is a better choice.** It meets all the criteria in TCO Certified, the world's most comprehensive sustainability certification for IT products. Thank you for making a responsible product choice, that help drive progress towards a more sustainable future!

Criteria in TCO Certified have a life-cycle perspective and balance environmental and social responsibility. Conformity is verified by independent and approved verifiers that specialize in IT products, social responsibility or other sustainability issues. Verification is done both before and after the certificate is issued, covering the entire validity period. The process also includes ensuring that corrective actions are implemented in all cases of factory non-conformities. And last but not least, to make sure that the certification and independent verification is accurate, both TCO Certified and the verifiers are reviewed regularly.

### Want to know more?

Read information about TCO Certified, full criteria documents, news and updates at [tcocertified.com](https://www.tcocertified.com). On the website you'll also find our Product Finder, which presents a complete, searchable listing of certified products.

## Equipment

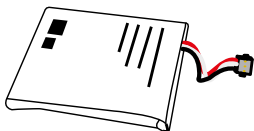


1x Screwdriver  
(T6)



1x ESD- safe tweezers  
(optional)

## Replacement battery

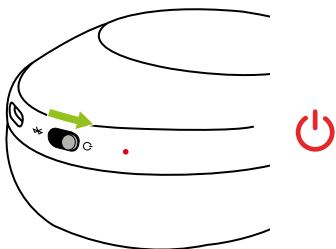


Part number:

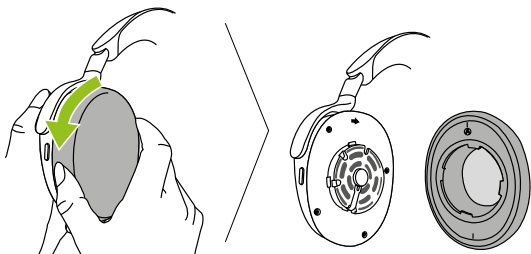
[14151-10](#)

Ensure you have the replacement part before starting disassembly.

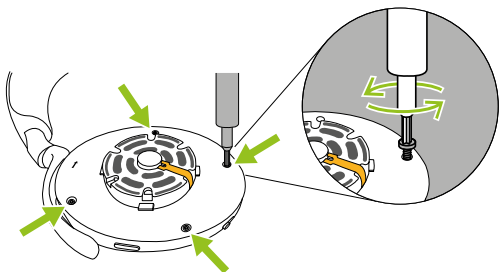
1. Ensure your headset is powered off and not connected to a charger.



2. Remove the ear cushion by rotating it counter-clockwise. Do not apply pressure to the headband to remove the ear cushion.



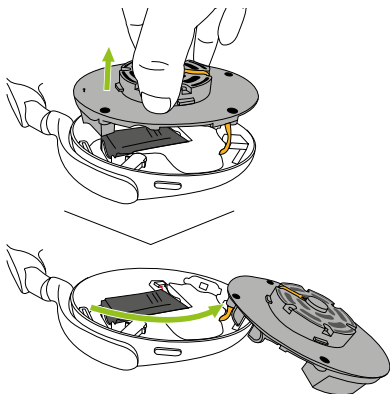
3. Use the **T6 screwdriver** to remove all 4 screws.



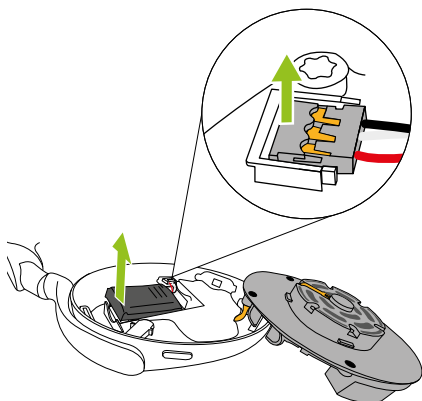
4. Carefully lift and rotate the speaker housing to access the battery.

### **WARNING!**

Be careful lifting the speaker housing as it has a cable connecting it to the outer earcup. Do not disconnect or sever this connection as it may damage the headset.

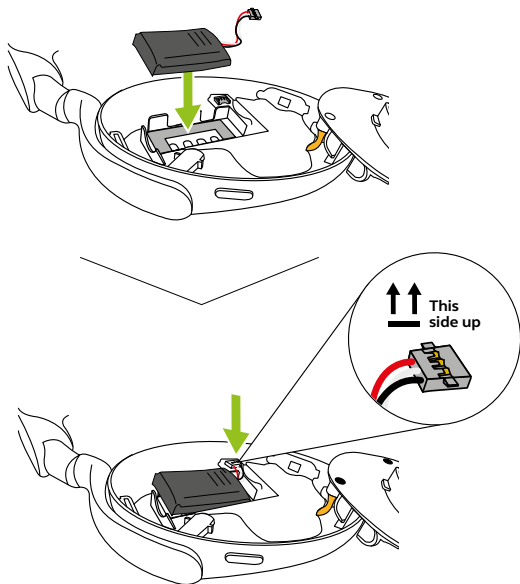


5. Lift the battery connector upward to disconnect.  
Remove the battery from the earcup.

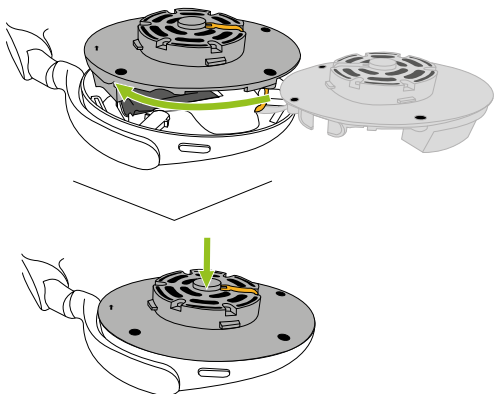


6. Check your local regulations regarding proper battery disposal requirements and dispose of the used battery in accordance with any/all applicable laws.

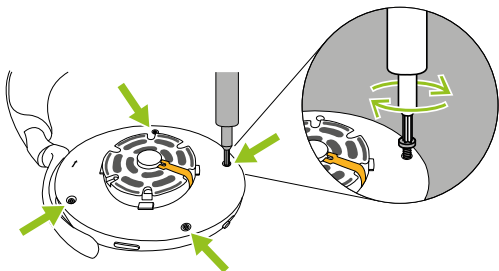
7. Insert the replacement battery into the earcup with the foam facing down. Align the battery connector with the connection port and press down.



8. Rotate and lower the speaker housing back to its original position. Make sure the connecting cable is not twisted before replacing the speaker housing.



9. Screw in all 4 screws.



11. Attach the the ear cushion by rotating the cushion to the left of center before placing and rotating it to the right. Incorrect ear cushion placement may cause sound leakage and reduced audio performance.

