

# Battery Repair Guide

Jabra Perform 45 SE

## Equipment



1x PH000 /  
#000 Phillips  
screwdriver

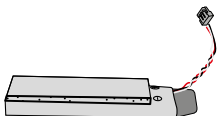


1x Tweezers

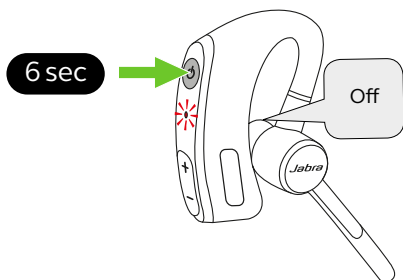


1x Spudger  
(optional)

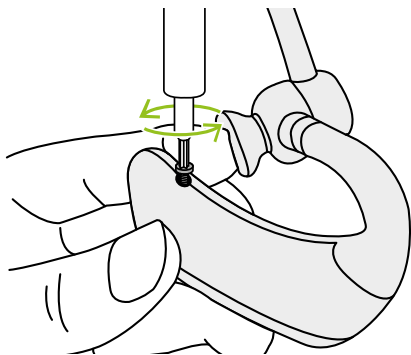
## Replacement battery



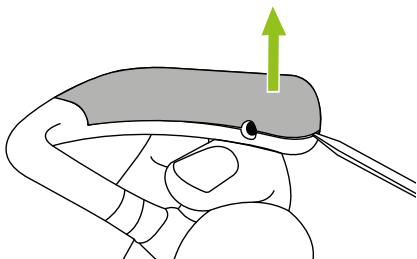
1. Ensure your headset is powered off and not connected to a charger.



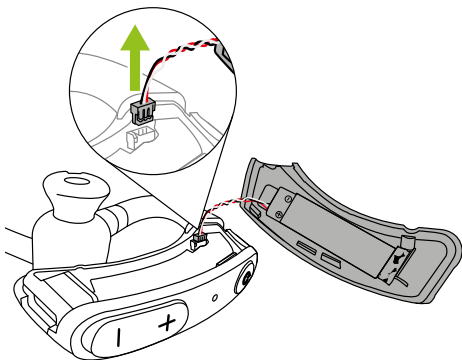
2. Remove the screw from the underside of the ear hook using the screwdriver.



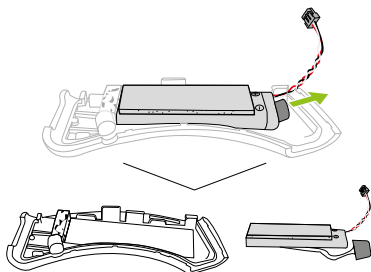
3. Insert the tweezers or a spudger between the headset and the battery cover to pry them apart. The battery will remain attached to the headset by the battery cable.



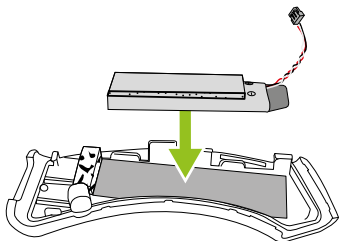
4. Use the tweezers to gently pull the battery connector out of its port to disconnect the battery.



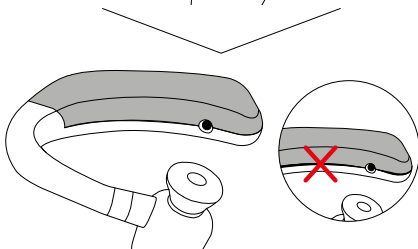
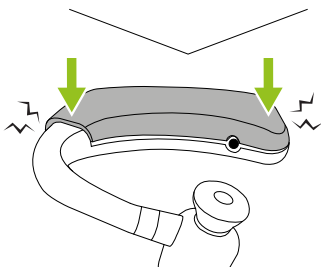
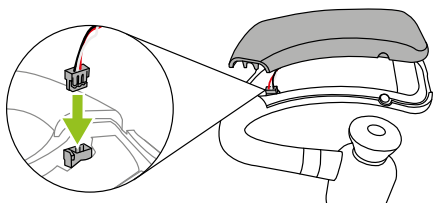
5. Locate the pull tab on the end of the battery and pull outwards until the battery detaches from the cover.



6. Check your local regulations regarding proper battery disposal requirements and dispose of the used battery in accordance with any/all applicable laws.
7. Remove the protective film from the adhesive side of the replacement battery. Place the battery with the adhesive side facing down, ensuring the pull tab is positioned at the end opposite the charging port.



8. Insert the battery connector plug into the port. Align the battery cover with the headset, then press together. You will hear audible clicks as the cover securely snaps into place. Ensure there are no gaps between the headset and battery cover.



9. Screw in the screw.

